

THIS DRAWING IS UNPUBLISHED. RELEASED FOR PUBLICATION NOV ,2003.
 © COPYRIGHT 2003 BY TYCO ELECTRONICS CORPORATION. ALL RIGHTS RESERVED.

LOC	DIST	REVISIONS			
P	LTR	DESCRIPTION	DATE	DWN	APVD
E	B	C	ECR-07-000535	09/01/07	AM FWK

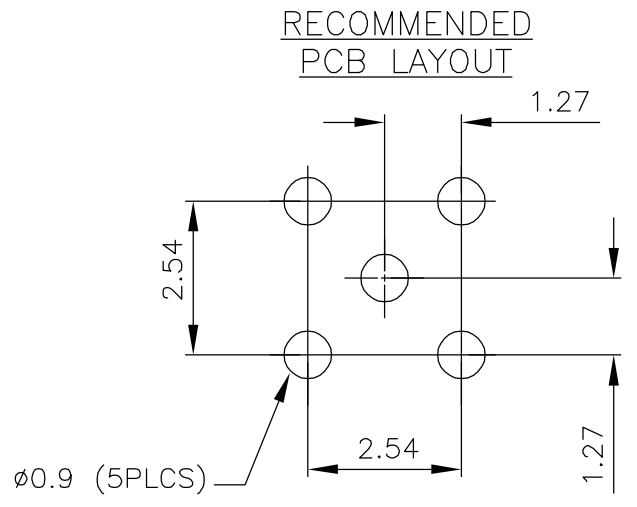
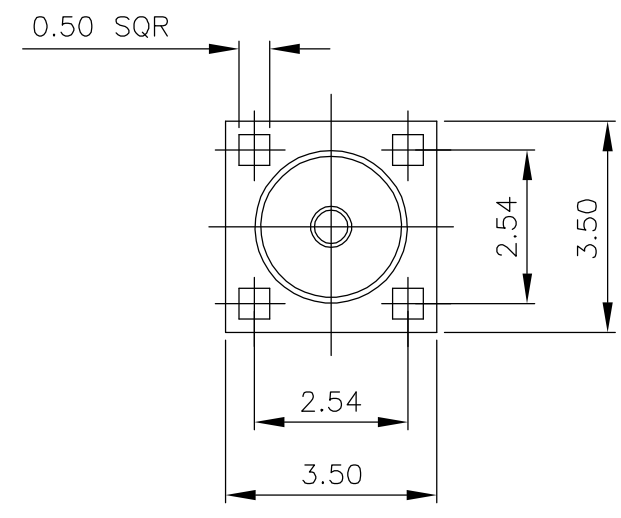
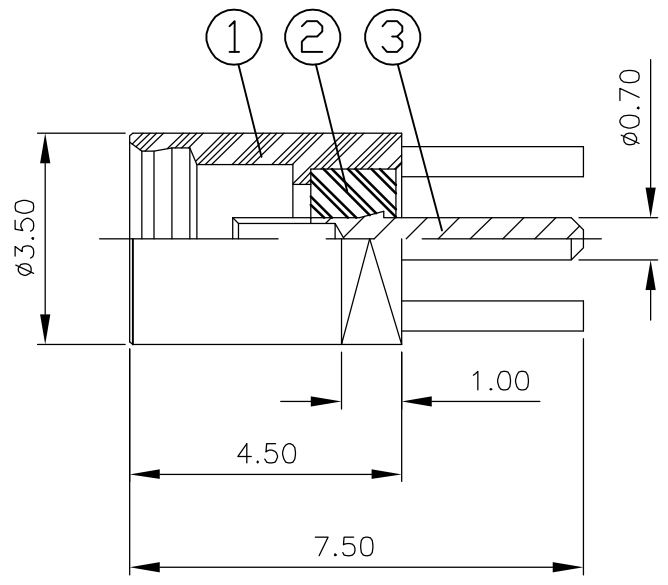
- ① SINGLE PACK IN ACCORDANCE WITH SPEC 107-3275
- ② 100 TRAY PACK IN ACCORDANCE WITH SPEC 107-3275
- ③ Au PLATING
- ④ FLASH Au PLATING

ELECTRICAL CHARACTERISTICS
 FREQUENCY RANGE: 50 Ohm DC - 6GHz
 INSULATION RESISTANCE: 1000MOhm
 WORKING VOLTAGE: 335V RMS at Sea Level
 DIELECTRIC WITHSTAND VOLTAGE: 500V RMS Max
 CONTACT RESISTANCE: 5.00 MOhm Max
 CENTRE CONTACT:

MECHANICAL CHARACTERISTICS
 DURABILITY: 500 Cycles Min

ENVIRONMENTAL CHARACTERISTICS
 OPERATING TEMPERATURE: -65°C to +165°C

- 5 FOR TECHNICAL DATA REFER TO YOUR LOCAL TYCO ELECTRONICS SALES OFFICE
- 6 ALL DIMENSIONS ARE NOMINAL FOR REFERENCE ONLY UNLESS OTHERWISE STATED



QUANTITY PER ASSY	PARTS LIST	
1	1	BERYLLIUM COPPER ③ SOCKET 3
1	1	PTFE INSULATOR 2
1	1	BRASS ④ BODY 1
6--0	1--0	MATERIAL DESCRIPTION ITEM
②	①	

THIS DRAWING IS A CONTROLLED DOCUMENT.		DWN J.SANDWELL 12NOV03	Tyco Electronics Corporation Stanmore, Middlesex, HA7 4RS	
DIMENSIONS: MM		CHK S.PARLOW 12NOV03		
TOLERANCES UNLESS OTHERWISE SPECIFIED:		APVD F.WHEELER-KING 12NOV03	NAME: MMCX STRAIGHT PCB MOUNT SOCKET RECEPTACLE 50 OHMS	
0 PLC ± - 1 PLC ± - 2 PLC ± - 3 PLC ± - 4 PLC ± - ANGLES ± -		PRODUCT SPEC 108-3462	SIZE CAGE CODE DRAWING NO RESTRICTED TO	
MATERIAL: SEE TABLE		APPLICATION SPEC 411-3280	A3 00779 C-1634009	
FINISH: SEE TABLE		WEIGHT: -	SCALE NTS SHEET 1 OF 1 REV C	
CUSTOMER DRAWING				